



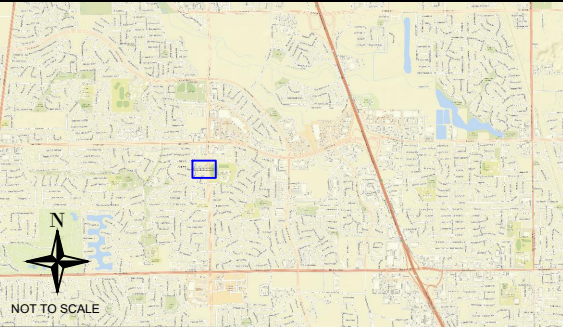
2M LOCATING, LLC  
1255 Starboard Dr.  
Suite B  
West Sacramento, CA 95691  
916-237-7445  
2mlocating.com

1. This drawing is intended to document markings and comments collected by 2M Locating, LLC (2ML). 2ML cannot guarantee it will be able to locate all utilities or other subsurface features on site. All findings are subject to the terms and conditions and can be viewed with the link: <https://2mlocating.com/2ml-services-terms-conditions/>
2. 2ML does not provide geophysical, geological, land surveying or engineering services
3. Private utility locating is never a replacement for One Call/811 services. State law requires 811 to be called prior to any and all excavation activities.
4. Depths shown hereon are approximate. For accurate depths of utilities perform potholing method.
5. On-site markings denoted in this map are good for up to 30 days. 2ML is available to re-mark subject property.

LEGEND

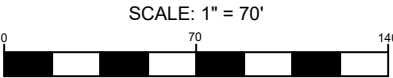
- C COMMUNICATION
- E ELECTRIC
- W WATER
- SS SANITARY
- SD STORM DRAIN
- G GAS
- D= DEPTH

LOCATION PLAN



2M UTILITY FINDING MAP

For Information Only  
Call 811 Before you dig



IF SHEET IS LESS THAN 11"x17"  
IT IS A REDUCED PRINT. SCALE ACCORDINGLY

OVERVIEW

REV	DESCRIPTION	DRWN	DATE
-	FIRST ISSUE	PM	9/28/2020
JOB NUMBER		SHEET NUMBER	
-		1	